

**MSFAQ.SE**

**Introduction to Windows  
Server Code Name "Longhorn"**

**Author: Stefan Olsson**

**January 07**

## Table of Contents

ABOUT STEFAN OLSSON .....	2
INTRODUCTION .....	3
WHAT'S NEW IN LONGHORN .....	4
SERVER MANAGEMENT .....	4
ICT .....	4
SERVER MANAGER .....	5
LONGHORN SERVER CORE .....	6
ACTIVE DIRECTORY .....	6
RODC .....	7
BITLOCKER .....	7
TERMINAL SERVICES .....	7
IIS 7 .....	8
NAP .....	8
WDS .....	8

# MSFAQ.SE

---

## Introduction to Windows Server Code Name "Longhorn"

### About Stefan Olsson



I am Stefan Olsson, since 2000 I have been working professionally with IT. But I have been working with computers during the most part of my life. It all started 1986 when I was six years old and got my first Commodore64 for Christmas. I started playing with it and found my very most interest for computers.

Today I have turned 26 and have worked with a lot of things in my IT career. As of today I am working on a global company managing their IT Infrastructure all over the world.

I am certified MCSA + Messaging, and working on my MCSE and after that I will be working on my planned CISSP certification.

If you want to send me an e-mail or add me to your msn messenger you are more than welcome to do that on stefan [dot] olsson <AT> sec-labs [dot] com



## Introduction

For those who don't know anything about Microsoft's next server operating system which goes under the codename "Longhorn" I hope this article will give you a brief introduction to the new features the Operating system will be providing.

All screenshots in this article are from build 6001 ("wsl\_6001.16406.061208-1900\_x64fre\_server-KB3SxFRE\_EN\_DVD.iso").

I will describe some of the new features and show you some looks of the new improved GUIs. I will be using the term Longhorn even if it is still a codename. But remember that the product is still in beta so it's not feature complete.

There will be a series of "longhorn" articles on my site [www.msfaq.se](http://www.msfaq.se) that will describe the new features in more detail.

- *Introduction to Windows Server Code Name "Longhorn"* (This article)
- Longhorn and Server core mode
- Longhorn and Active Directory
- Longhorn and Terminal Services
- Longhorn and Network Access Protection
- Longhorn and Windows Deployment Services

Since this is my first article in on msfaq.se I put in some information about me so that you get my background. I hope you enjoy your reading.



THE NEW LOGON SCREEN

## What's new in Longhorn

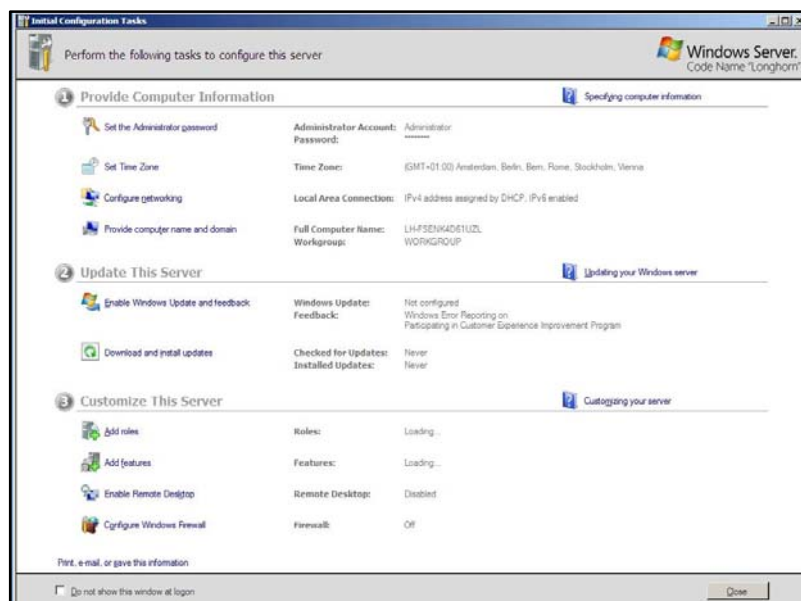
What Microsoft is pointing at in their material they are publishing is of course as usual the key points of better control, higher availability, and better flexibility. But it feels like they have put in a lot of work behind these words for an example with new features of NAP (Network Access Protection), WDS (Windows Deployment Services), TS (Terminal Services), and all new GUIs and the integration to their newly released Client OS Windows Vista. As you understand I won't mention all new features but will describe some of them in this article.

I will cover some features more in detail in upcoming articles.

## Server Management

### ICT

Initial Configuration Tasks gives you an easier way to setup your newly installed server. The ICT is to help when installing new servers to configure the base settings of the server. It replaces the wizard that came in Windows 2003, and has more features and possibilities than the old one.

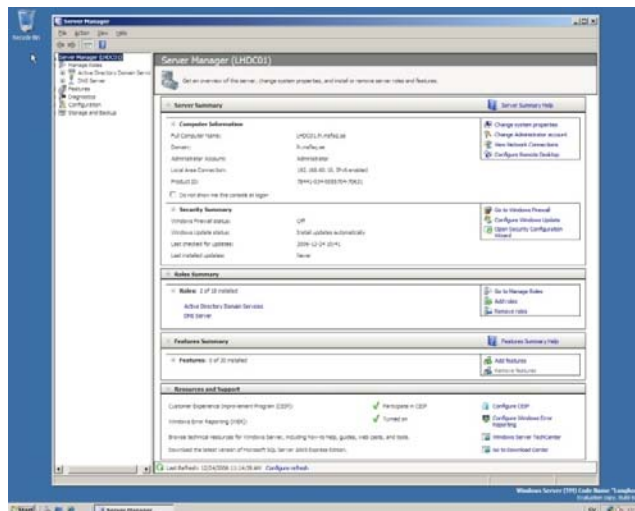


INITIAL CONFIGURATION TASKS GUI



## Server Manager

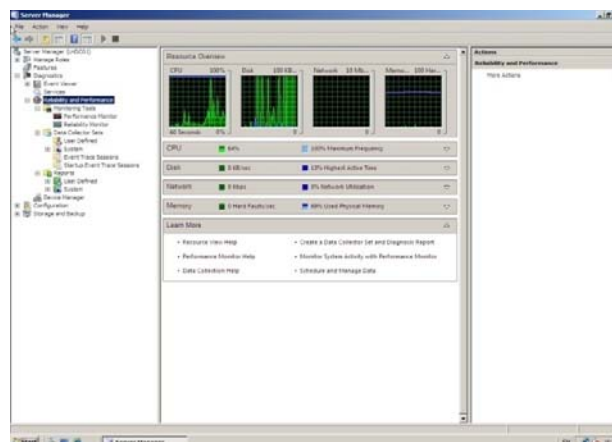
Server manager is the new way to manage your server. Many wizards are replaced by this new management tool for an example SCW (Security Configuration Wizard) and Add Remove Windows Components in the control panel. Server Manager is installed by default and is possible to run if you have the right privileges on the server. It is based on the MMC 3.0 and gives you an extra column where you can specify tasks.



THE NEW SERVER MANAGER

## Reliability and Performance

In the server manager you will find performance and reliability monitoring features. The reliability is new from a server perspective but you may be familiar with this from Windows Vista where it was added. It provides you with follow up on activities and errors that has occurred on your server, so that it will be easier to troubleshoot. And see when the errors happen on a timeline.



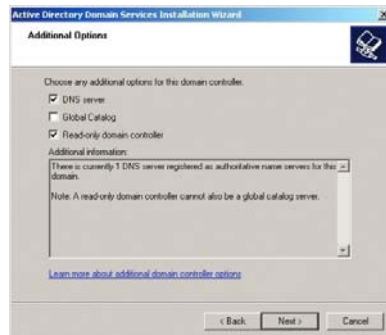
RELIABILITY AND PERFORMANCE GUI





## RODC

Read only domain controllers gives you the option to maintain a better security strategy for your branch offices. There will be more information about this in my upcoming article about “Longhorn and Active Directory”.



RODC OPTION IN THE DCPROMO SETUP

## Bitlocker

If you have a TPM chip in your server you may install Bitlocker to provide you with encryption on your server. Why do I want to encrypt ? I have to reasons to encrypt the hard drive on a server, The first is to secure the branch office server that maybe doesn't have the same physical security as your main server room, and the other is from a lifecycle perspective, what do you do with your old servers? Throw away the certificate and you are pretty safe instead of sending your drives to a expensive destruction service.

## Terminal Services

Terminal Services has really been improved in this release features like “Remote Application Publishing” and Terminal Services Gateway are really nice. Remote Application Publishing gives you the feature to publish an application to run seamless on a client. In the earlier versions you needed to have Citrix to do this. A terminal services gateway function is also a new feature and if you know CSG (Citrix secure gateway) the feature will provide similar functions to your Terminal Server environment. For those of you who doesn't know anything about CSG, it's about providing RDP/TS over https to be able to work remotely without VPN connectivity.

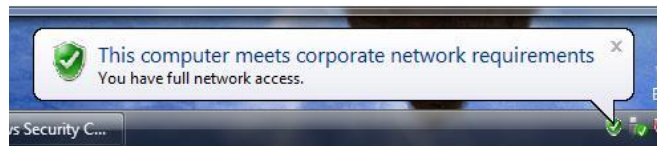


## IIS 7

I just want to mention that Longhorn comes with IIS 7 which will be the most powerful web server Microsoft ever has released, which I think is a funny marketing thing, why develop something that isn't better than your previous versions. What I understand they have put in a lot of work in diagnostics, troubleshooting and management of the web server. If you want to know more on IIS 7 I would recommend browsing [www.iis.net](http://www.iis.net).

## NAP

Network Access Protection is a way to secure your network with more granularity. NAP will for an example provide you with features to implement a quarantine network for clients before they connect to ensure that they have the right patches and antivirus patterns.



SUCCESSFULLY CONNECTED

## WDS

Windows Deployment Services is a new feature which replaces RIS (Remote Installation Services). It's used to install Operating systems for servers and clients. WDS will have support for WIM images which is the new image format for Longhorn and Windows Vista deployments.

