

MSFAQ.SE

**Installing WSUS 3.0 SP1 on
Windows 2008**

Author: Stefan Schörling

March 08

Table of Contents

INSTALLING WSUS 3.0 SP1 ON WINDOWS 2008.....	2
BACKGROUND.....	2
PREREQUISITES.....	3
IIS.....	3
MICROSOFT REPORT VIEWER.....	8
INSTALLING WSUS.....	8

MSFAQ.SE

Installing WSUS 3.0 SP1 on Windows 2008

Installing WSUS 3.0 SP1 on Windows 2008

Background

I have had a few customers asking for WSUS on Windows 2008. As you might know you need WSUS 3.0 SP1 to install it on the Windows 2008 platform. WSUS can be used standalone and now it is also part of a Configuration Manager installation when using Software Update Point.

I will cover the prerequisites and installation in this article. I will not cover Configuration.

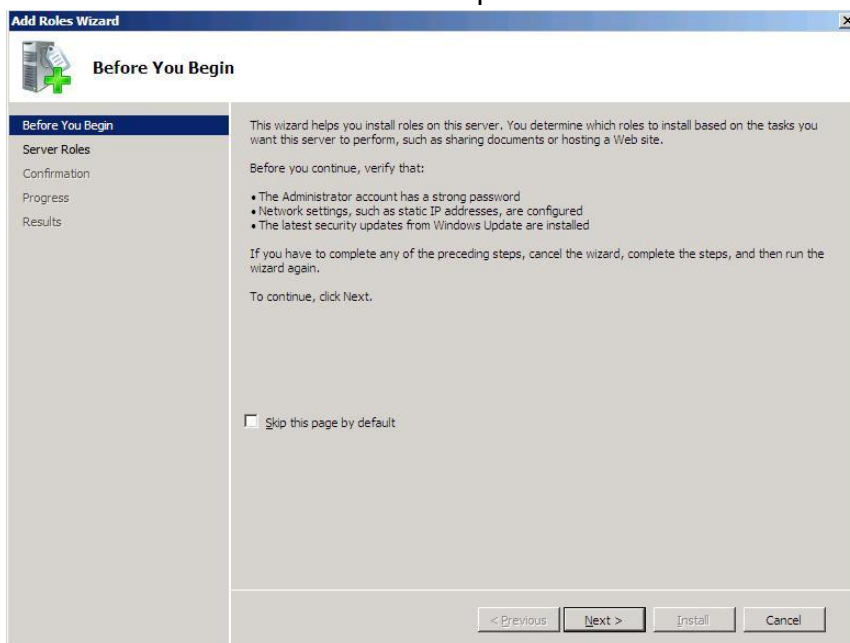
Prerequisites

IIS

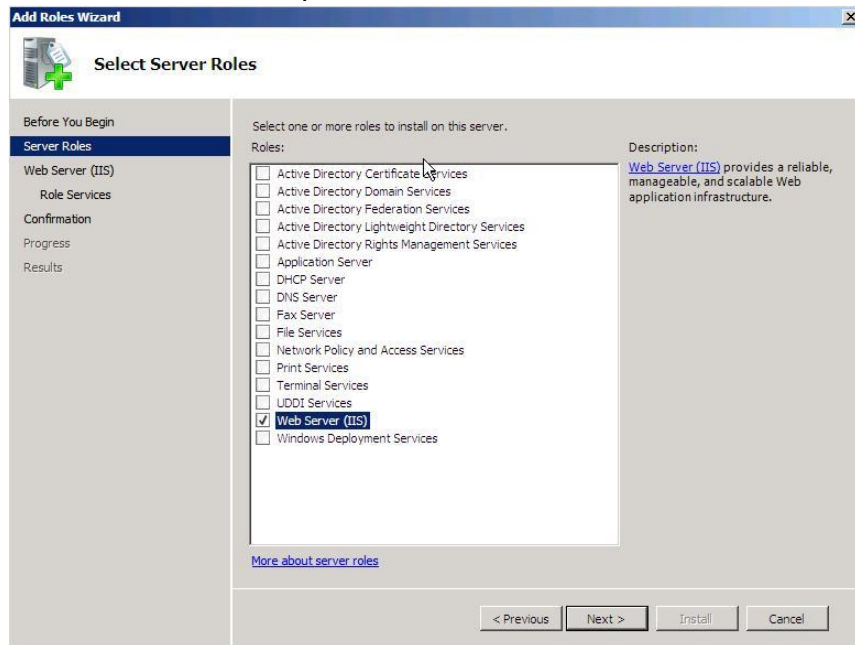
To use WSUS 3.0 SP1 on Windows 2008 you need to configure your server to have certain IIS role services. This guide will go through the prerequisites in IIS for Installing WSUS 3.0 SP1 on Windows 2008.

Start Server Manager

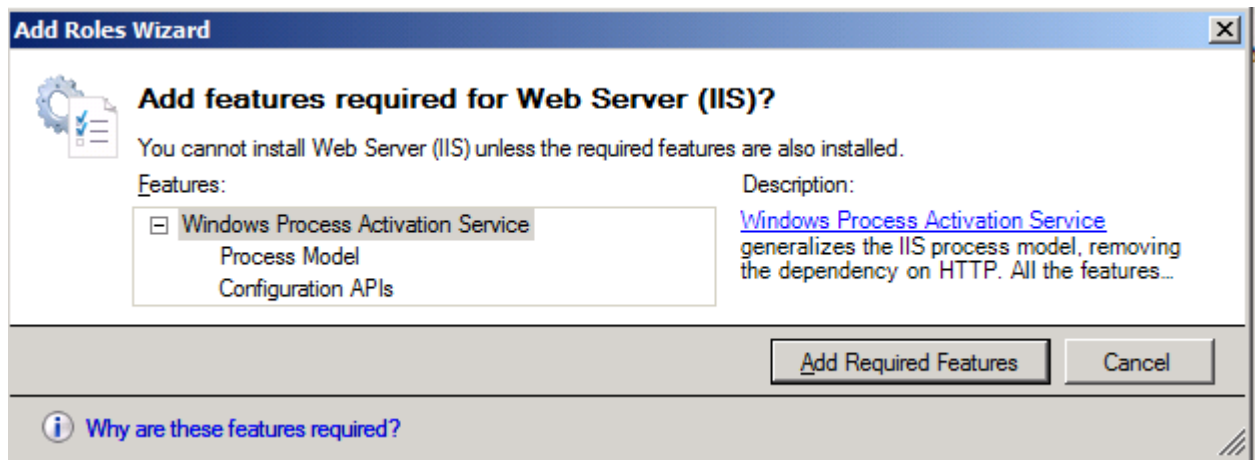
Start the Add Roles Wizard and press next



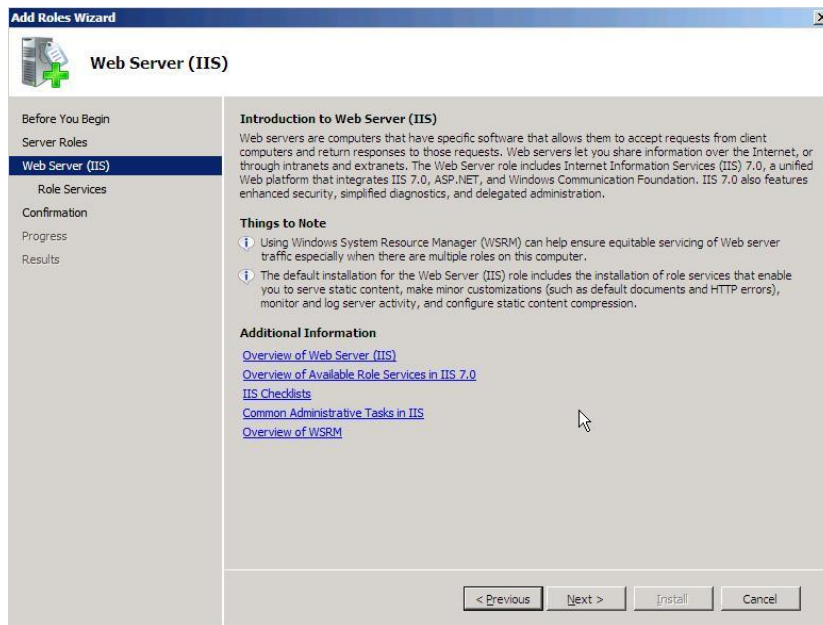
Choose the IIS Component



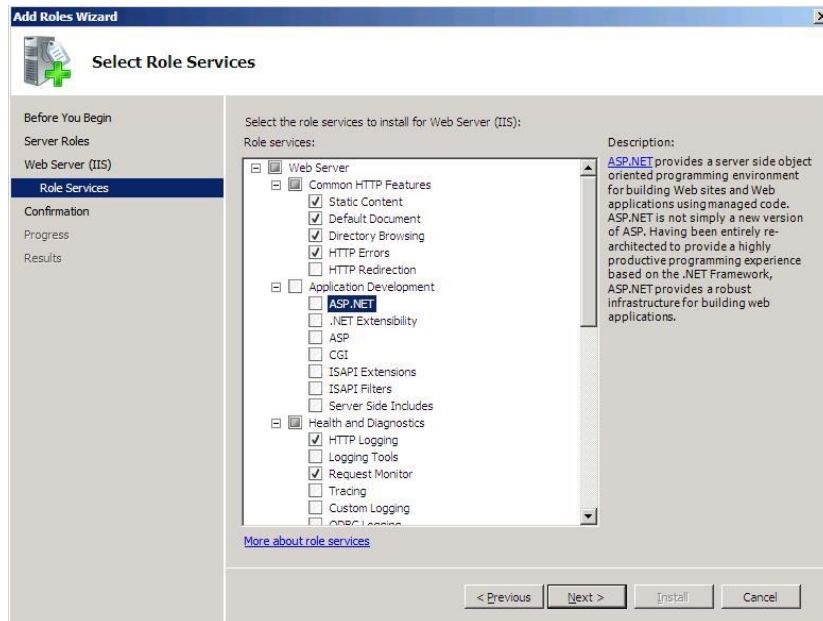
Add the required feature



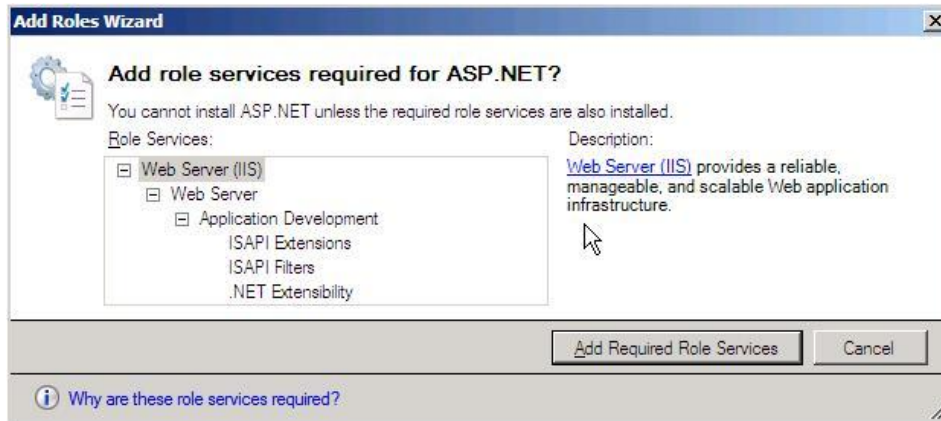
Press next



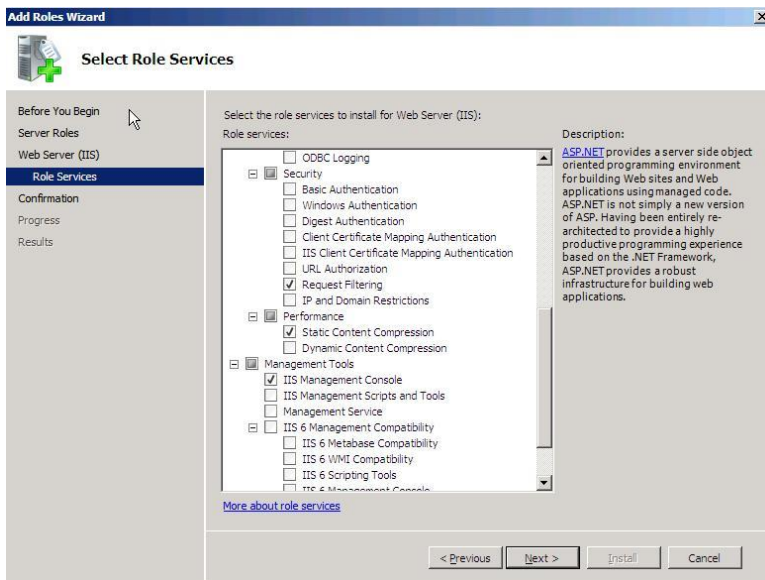
Add the ASP.NET role service



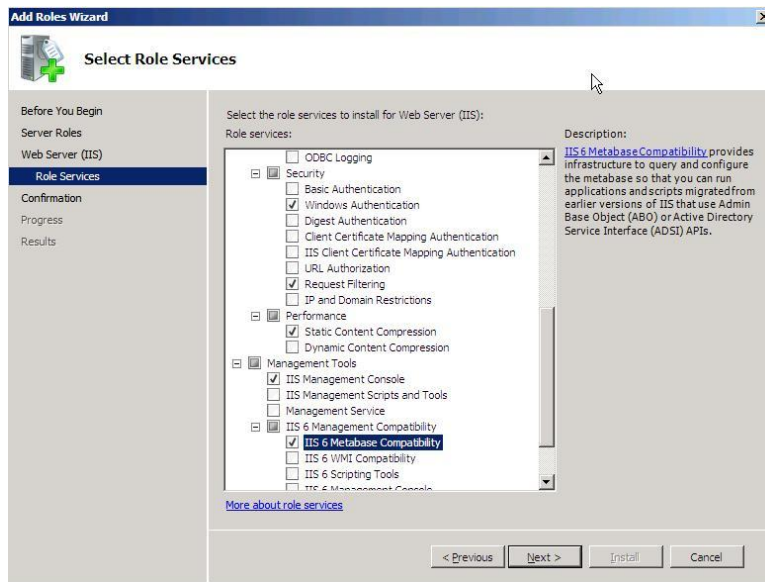
Press "Add Required Role Services"



Scroll down



Select Windows Authentication and IIS 6 Metabase Compatibility and press next.



Let the Role wizard complete.

Microsoft Report Viewer

To see visual charts in reporting you would also need to install the Microsoft Report Viewer.

Download and Install Microsoft Report Viewer from the following location:

<http://go.microsoft.com/fwlink/?LinkId=70410>

Installing WSUS

Download the preferred version for your operating system platform.

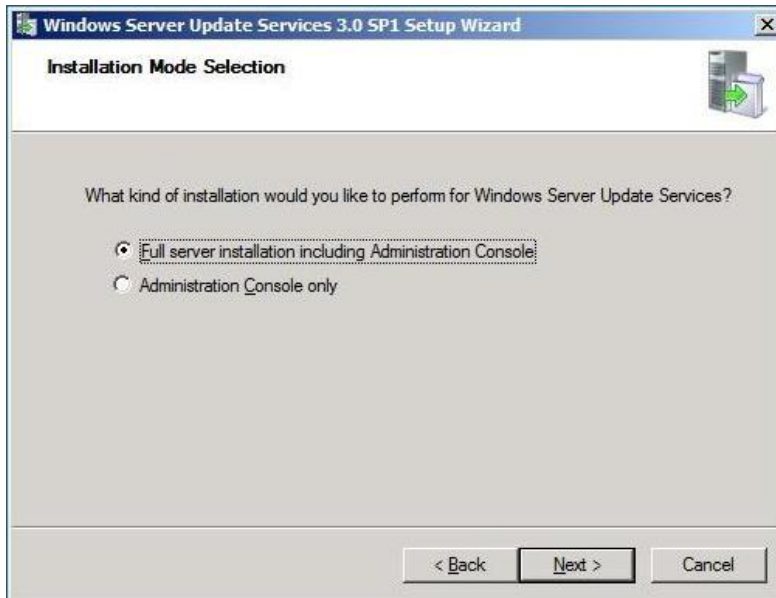
X86 / X64

<http://www.microsoft.com/downloads/details.aspx?FamilyId=F87B4C5E-4161-48AF-9FF8-A96993C688DF>

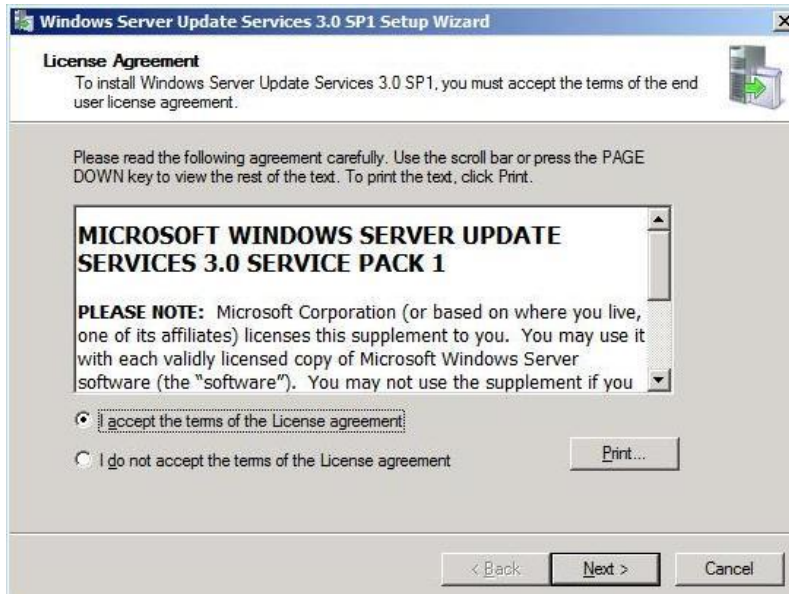
Launch the setup and press next.



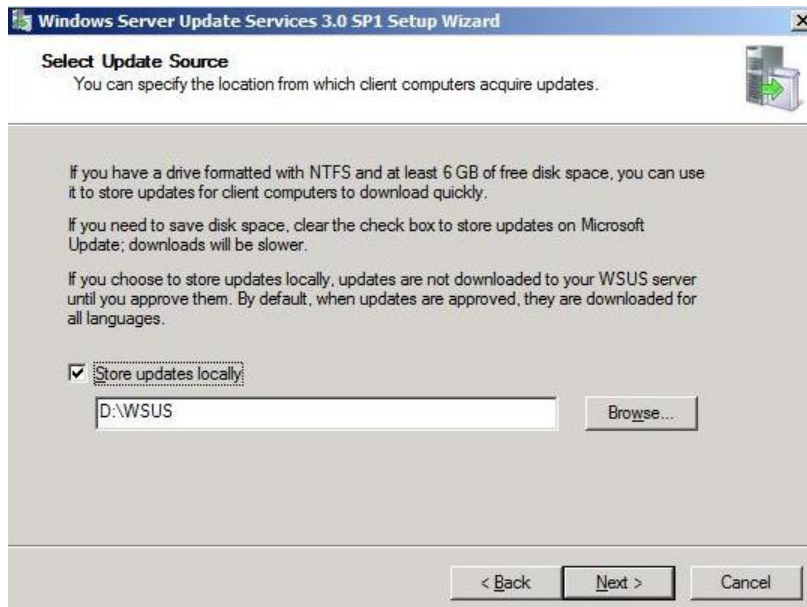
Choose full server installation if you don't just want to install the administrator console.



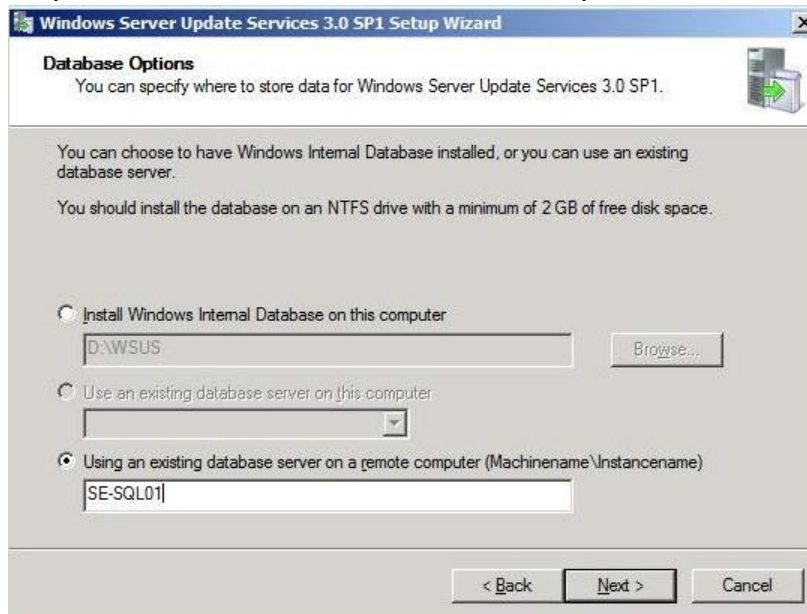
Accept EULA if you agree to the terms.



The next step will be where you want to save your updates.



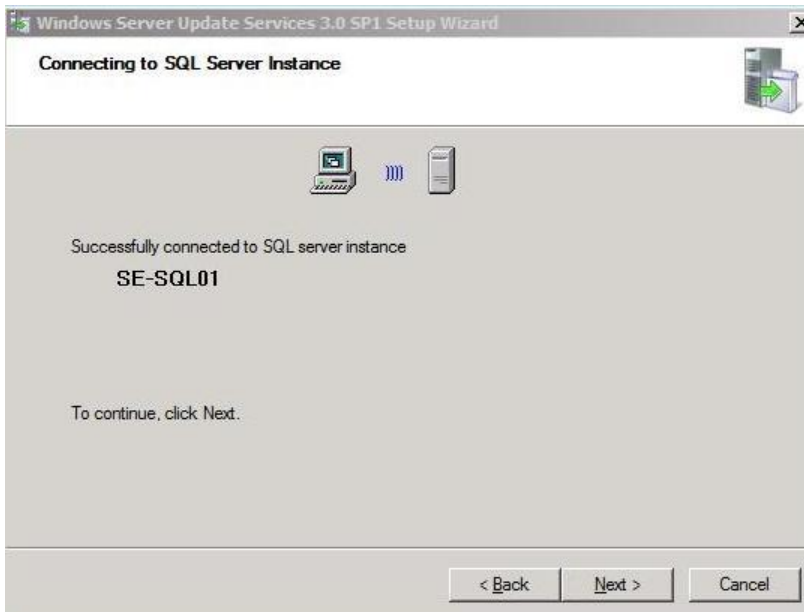
This part considers the database if you have a separate SQL Server that you want to host the database on you can type in that like I have done in the example below. Or you can use the internal database option.



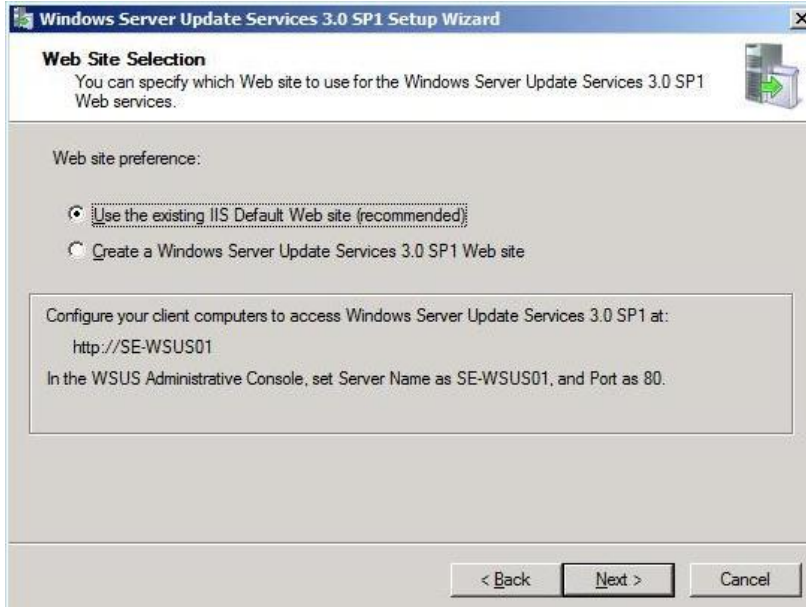
As I choose a remote SQL It first tries to connect to verify connectivity. Make sure you have the right network ports open and your protocols enabled on your SQL Server.



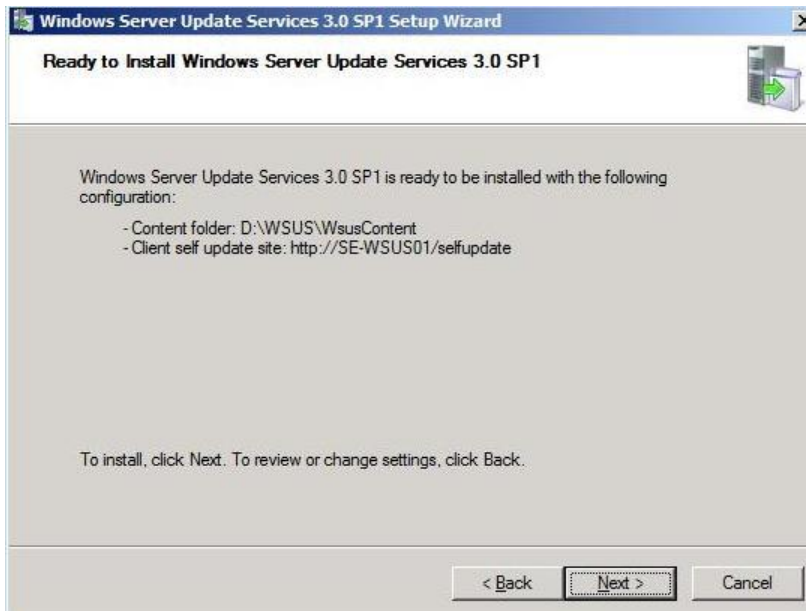
Yes ! Success



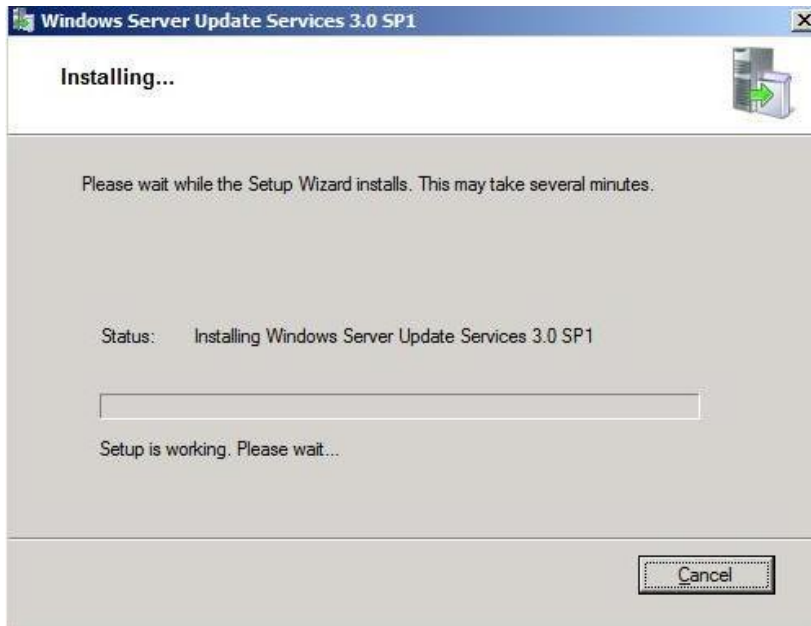
Here you will need to choose if you want to use the default website or you want to create a new site. If you have a standalone WSUS machine this will do fine with the default site. If you are installing Configuration Manager and you want to have everything on a single box I would go for the create a new WSUS Site option.



Press Next



Let the progress continue.



You have finished installing WSUS! Press finish.

